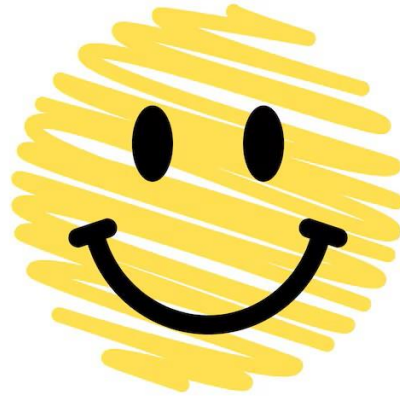


# Exchange Student Welcome



Peer-Olaf Siebers

Senior Tutor and Exchange Coordinator

[peer-olaf.siebers@nottingham.ac.uk](mailto:peer-olaf.siebers@nottingham.ac.uk)

22/09/2025

# Purpose of the Session

- Introducing myself as advisor
  - Anything related to your exchange: **Ask Me**
  - Exchange + Binus Students: Pastoral or academic topics: **Ask me**
  - UNNC + UNM + Transfer Students: **Ask your UoN Personal Tutor**
- In this session I will ...
  - Reiterating important points from the Y2/Y3 welcome sessions
  - Cover specific welcome topics for international students
  - Provide more details about activity opportunities for international students and how to have an enjoyable time at UoN
  - Reiterate the operation of the Wellbeing and Support Network

File Edit View History Bookmarks Tools Help

Siebers > Home

people.cs.nott.ac.uk/pszps/

The University of Nottingham School of Computer Science


ima Intelligent Modelling & Analysis

Home Teaching Research Publications Dissertations PhDs Tutees LLM Blog ABM Blog

- [Mission Statement](#)
- [Latest News and Publications](#)

## Dr Peer-Olaf Siebers

Assistant Professor  
School of Computer Science [\[url\]](#)  
Intelligent Modelling & Analysis Research Group [\[url\]](#)  
The University of Nottingham [\[url\]](#)  
Nottingham [\[url\]](#), NG8 1BB, UK [\[url\]](#)  
Email: [peer-olaf.siebers@nottingham.ac.uk](mailto:peer-olaf.siebers@nottingham.ac.uk)  
Orcid ID: [0000-0002-0603-5904](https://orcid.org/0000-0002-0603-5904)  
CompSci Building, Room B35 [\[map\]](#)  
Office Hours: Please make an appointment via email  
My Official University Website [\[url\]](#)



### Mission Statement

My main research topic is the application of **Computer Simulation** and **Artificial Intelligence** to study human-centric and coupled human-natural complex adaptive systems. I am a strong advocate of using **Co-Creation** for object oriented **Agent-Based Modelling** (ABM). This novel and highly interdisciplinary research agenda involves disciplines like Social Science, Economics, Marketing, Psychology, Geography, Operations Research, and **Computer Science**. My current research is primarily concerned with the following three areas. On the **methodological frontier** I aim to advance the model development strategies for ABM, through the **Engineering Agent-Based Social Simulations** (EABSS) toolkit. On the **practical frontier** I look at novel uses of simulation for studying Urban Sustainability (including **Smart Cities** and **Smart Roads**), modelling **Human Behaviour** in **Floods** using ABM and **Virtual Reality**, and modelling people's wellbeing at local and global scale. I was a co-investigator in the Leverhulme funded project **Sustaining Urban Habitats**. Furthermore, I am working together with Nottingham City Council's Transport Strategy Department on some Smart City projects. On the **generative AI frontier** I am looking into the use of **Large Language Models** to support and advance agent-based model design and implementation.



# Welcome to the UoN School of Computer Science



# Welcome to the UoN School of Computer Science

- Head of School
  - Prof Tony Pridmore
    - [tony.pridmore@nottingham.ac.uk](mailto:tony.pridmore@nottingham.ac.uk)



# Welcome to the UoN School of Computer Science

- Max Wilson
  - Director of Student Experience
    - [max.wilson@nottingham.ac.uk](mailto:max.wilson@nottingham.ac.uk)





# A Global University

- Campuses in 3 Countries
- 70 world-leading professors and lecturers
- Students from all over the world
- More than 500 students in Y2



File Edit View History Bookmarks Tools Help

Computerphile - YouTube

www.youtube.com/@Computerphile/videos

YouTube GB

Search

Home Videos Playlists Posts

Latest Popular Oldest

Running an SQL Injection Attack - Computerphile  
4.5M views • 9 years ago

The Problem with Time & Timezones - Computerphile  
4.2M views • 11 years ago

Password Cracking - Computerphile  
3.5M views • 9 years ago

Cracking Enigma in 2021 - Computerphile  
2.7M views • 4 years ago

Hacking Websites with SQL Injection - Computerphile  
2.4M views • 11 years ago

Floating Point Numbers - Computerphile  
2.4M views • 11 years ago

How NOT to Store Passwords! - Computerphile  
2.3M views • 11 years ago

Why Electronic Voting is a BAD Idea - Computerphile  
2.2M views • 10 years ago

Running a Buffer Overflow Attack - Computerphile  
2.1M views • 9 years ago

Characters, Symbols and the Unicode Miracle - Computerphile  
2M views • 12 years ago

"C" Programming Language: Brian Kernighan - Computerphile  
1.9M views • 10 years ago

Why C is so Influential - Computerphile  
1.9M views • 8 years ago





File Edit View History Bookmarks Tools Help

Computerphile - YouTube

www.youtube.com/@Computerphile/videos

YouTube GB

Search

Home Videos Playlists Posts

Latest Popular Oldest

Home

Shorts

Subscriptions

You

Downloads

<HyperLogLog Counting> 4:20

HyperLogLog Hit Counter - Computerphile

19K views • 2 days ago

<Sleeper Agents> 13:38

Sleeper Agents in Large Language Models - Computerphile

190K views • 9 days ago

<Generative Video> 27:33

How Generative AI Video Works - Computerphile

54K views • 2 weeks ago

<CPU Summary> 23:07

CPU Summary - Computerphile

27K views • 3 weeks ago

<SHA3 Sponge> 27:37

The Next Big SHA? SHA3 Sponge Function Explained - Computerphile

133K views • 1 month ago

<Gödel's Incompleteness Theorem> 18:55

Gödel's Incompleteness Theorem - Computerphile

85K views • 1 month ago

<Writing a Text Editor> 22:01

Writing a Text Editor - Computerphile

203K views • 1 month ago

<Memory Mapping> 26:14

Memory Mapping - Computerphile

64K views • 1 month ago

<Similarity from Compression> 5:13

Zip It! - Finding File Similarity Using Compression Utilities - ...

46K views • 2 months ago

<CPU Kernel Mode> 13:27

CPU Kernel Mode - Computerphile

49K views • 2 months ago

<World Foundation Models> 12:48

World Foundation Models - Computerphile

41K views • 2 months ago

<Reinforcement Learning> 15:06

Reinforcement Learning - Computerphile

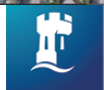
52K views • 2 months ago









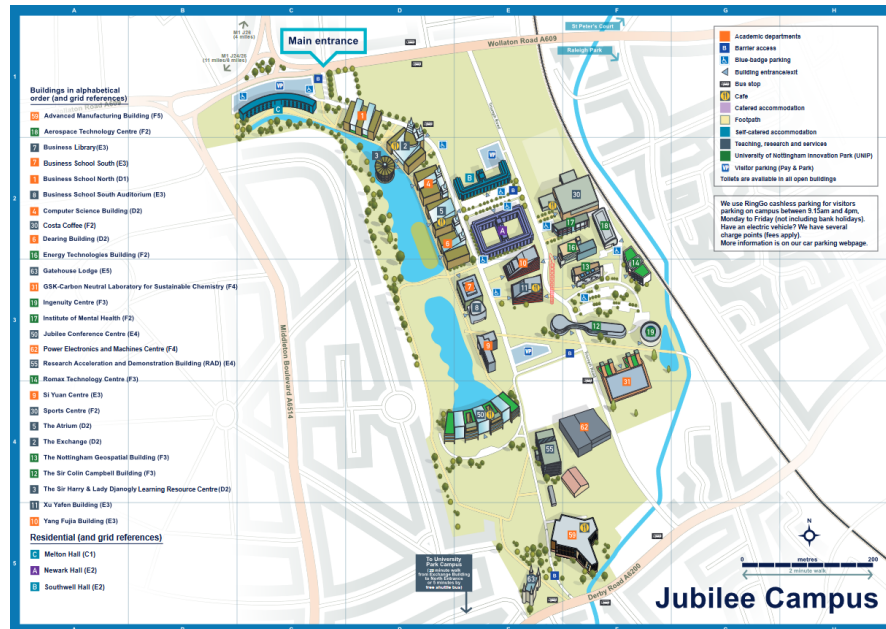


University of  
Nottingham  
UK | CHINA | MALAYSIA



# UK Campuses and Maps

- <https://www.nottingham.ac.uk/about/campuses/campuses.aspx>



UK  
China  
Malaysia

Study

About

Research

Business

News

Visit

A-Z

keyword(s)



University of Nottingham > About > Campuses

## Campuses

About the University

### Campuses

Jubilee Campus

King's Meadow Campus

Medical School

Sutton Bonington Campus

University Hospital Sites

University Park Campus

China Campus

Malaysia Campus

Campus tours

Getting here

Key dates

Facilities

Facts and figures

We are proud of our award-winning campuses, both at home and abroad, and continually invest in the University's grounds, buildings and facilities.

Developing and managing the University's environment is at the heart of our values, ensuring that the student experience and environmental sustainability remain firmly on the University's agenda.

Maps and directions

Campus videos and galleries

University of Nottingham  
AccessAble guides



University Park Campus

One of the largest and most attractive campuses in the country, University Park is the hub of student life.



Jubilee Campus

This award-winning green campus is recognised for its innovative architecture and sustainability.

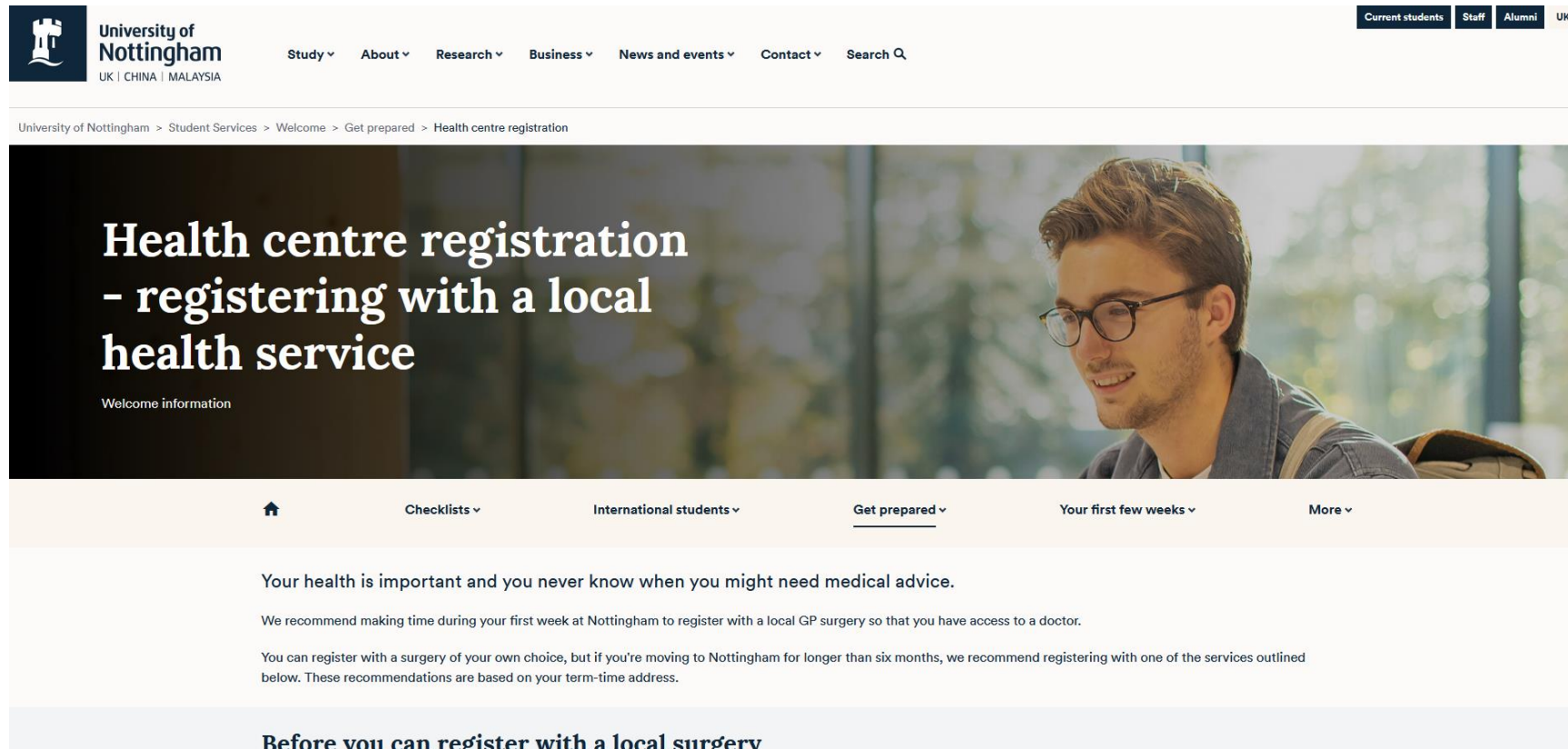


# Personal Tutor

- Your personal tutor
  - I am the personal tutor of all exchange students (UNNC and BINUS)
  - Students on mobility from other campuses keep their home personal tutor
    - I will look after them while they are here
- Role of your personal tutor
  - First point of contact and source of advice for anything related to your studies
  - Oversees your academic progress (and write references)
- You should meet your personal tutor
  - At the start of every semester (at least)
  - Any time in between, if needed (send email first)

# Register with Doctor

- <https://www.nottingham.ac.uk/studentservices/welcome/get-prepared/health-centre-registration.aspx>



The screenshot shows the University of Nottingham website. The header includes the university logo, name, and navigation links: Study, About, Research, Business, News and events, Contact, and a search bar. A secondary navigation bar contains links for Current students, Staff, Alumni, and a UK flag. The main content area features a large banner with the title 'Health centre registration - registering with a local health service' and a subtitle 'Welcome information'. Below the banner is a navigation bar with links: Home, Checklists, International students, Get prepared (which is underlined), Your first few weeks, and More. The main text on the page states: 'Your health is important and you never know when you might need medical advice. We recommend making time during your first week at Nottingham to register with a local GP surgery so that you have access to a doctor. You can register with a surgery of your own choice, but if you're moving to Nottingham for longer than six months, we recommend registering with one of the services outlined below. These recommendations are based on your term-time address.' At the bottom, there is a light blue box with the text 'Before you can register with a local surgery'.

# Labs and Flexible Student Spaces

- Computer Science Building
  - A32: Lab for teaching and self-study (needs to be vacated upon request)
  - C60: Cyber Security Lab (for teaching only)
  - A06/Pods: Flexible student spaces (useful for group project meetings)
  - B53: Quiet study space (please only occupy if you require a quiet place)
  - C11/B52: Smaller labs (mainly) for self-study
  - Atrium (School of Computer Science / School of Education)
- Dearing Building
  - A34: Lab for teaching and self-study (needs to be vacated upon request)

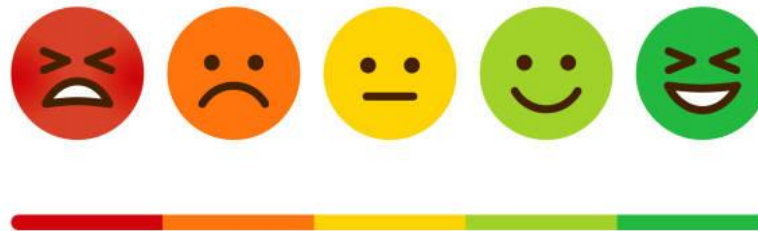
# Group Projects

- All Y2 students are spread across groups
  - You will be in a group with 5 or 6 UNUK students
  - You need to be a good team member
    - Contribute ideas
    - Contribute to discussions
    - Contribute code
    - Participate in presentations



# Grades

- From now on all grades count for your final degree
- Required commitment is getting higher
- Likelihood of getting top grades is getting lower



# Learn English!

- Learn even MORE English! Lots MORE English!
  - Make the most of this chance to learn more
  - Staff must rate your English speaking and writing in references
- Be brave with speaking English!
  - Most of my Ningbo group project students regret not being brave in group conversations
- Do not rely on Translators and/or Generative AI!

# Interesting Facts

- Great Britain vs United Kingdom vs British Isles



# What do you want to do after Graduation?

- Who do you ask to be your referee?
  - Your group supervisor knows you best during/after Y2
  - Your dissertation supervisor knows you best during/after Y3
  - Your personal tutor only knows you if you attend supervisor meetings
  - It is your responsibility to make sure they know you well enough
- Ask your referee before putting down their name! Give plenty of notice!
  - In the UK you are asked to provide the name of a referee, not the reference itself



# Study and Job References

- Your personal tutor only knows you if you attend supervisor meetings
  - Providing grades and a CV is not enough
- Normal Questions in a Reference
  - Is the applicant in the top X% of their class?
  - Is the applicant good at spoken English?
  - Is the applicant good at written English?
  - Is the applicant independent and confident?
  - Does the applicant try hard and have a good attitude?

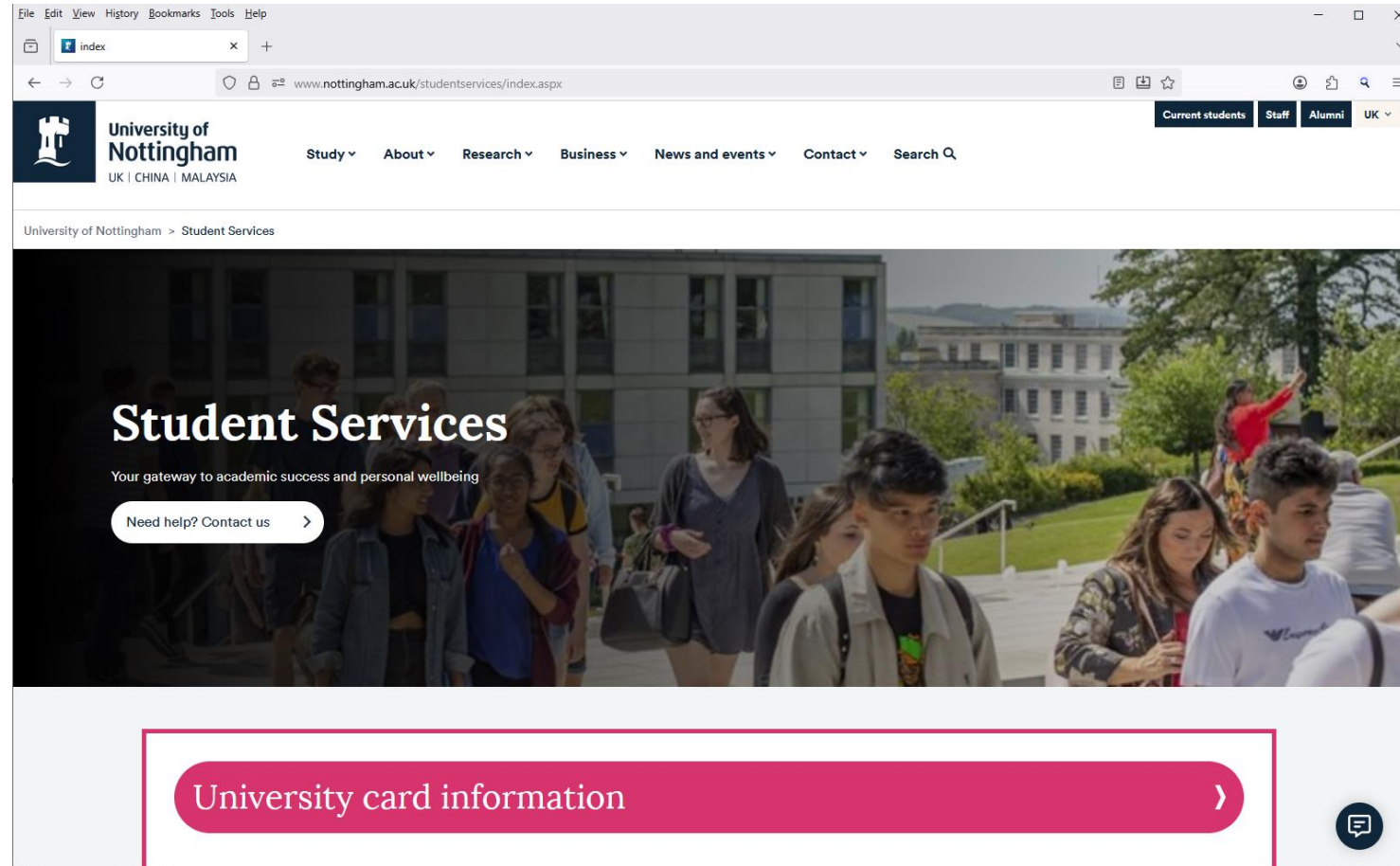
# Moodle CompSci Community Page

<https://moodle.nottingham.ac.uk/course/view.php?id=118881>

- 
- > General
- > Welcome Week Schedules
- > Get Help - Wellbeing, Mental ...
- > Get Help - Health & Safety
- > Get Help - Services for Stude...
- > Get Help - School Staff with ...
- > Get Help - Reps, Mentors & S...
- > Get Help - Careers Advice an...
- > Get Help - Local IT Support
- > Degrees - Study Abroad
- > Degrees - Industrial Placeme...
- > Modules - Module Choices In...
- > Modules - Experience Modules
- > Modules - BSc and MSci Proj...
- > Info - UG, PGT, PGR Handbo...
- > Info - Policy on Academic Mi...
- > Info - Transfers, Interruption...
- > Info - Project Ethics
- > Info - BCS and Accreditation
- > Info - Teaching Quality Assur...

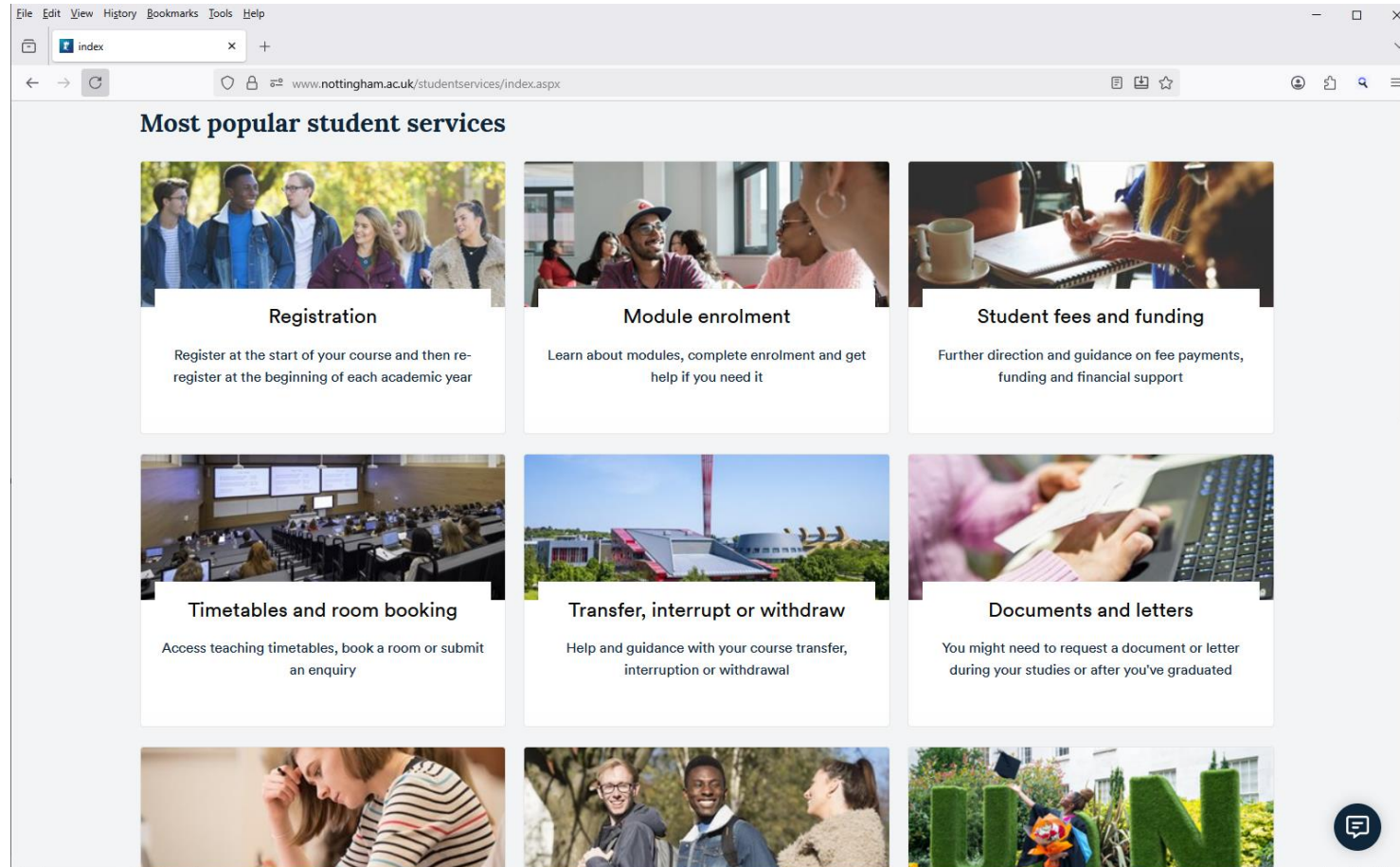
# Student Services

<https://www.nottingham.ac.uk/studentservices/>



# Student Services

<https://www.nottingham.ac.uk/studentservices/>





# Student Enquiries

<https://student-enquiries.nottingham.ac.uk/faqs/>

The screenshot shows a web browser window with the URL <https://student-enquiries.nottingham.ac.uk/faqs/>. The page header includes the University of Nottingham logo and navigation links: FAQs, Enquire and submit, a search icon, and the name Peer-olaf Siebers. The main heading is "Find answers to our most frequently asked questions". Below this, a text block states: "You can find all our FAQs about your time at university below, or you can use the search bar to search to easily search our FAQs." A search bar with a dropdown menu set to "All" and a search icon is present. Below the search bar is a list of FAQ categories: Accommodation, Appeals, Assessments, coursework, and exams, Disability support, Documents, Engagement and attendance (SEaTS App), Extenuating circumstances, Fees and charges, Financial support, Graduation, and IT Support.

File Edit View History Bookmarks Tools Help

Find answers to our most frequently asked questions

https://student-enquiries.nottingham.ac.uk/faqs/

University of Nottingham  
UK | CHINA | MALAYSIA

FAQs | Enquire and submit | Search | Peer-olaf Siebers

Home > Find answers to our most frequently asked questions

## Find answers to our most frequently asked questions

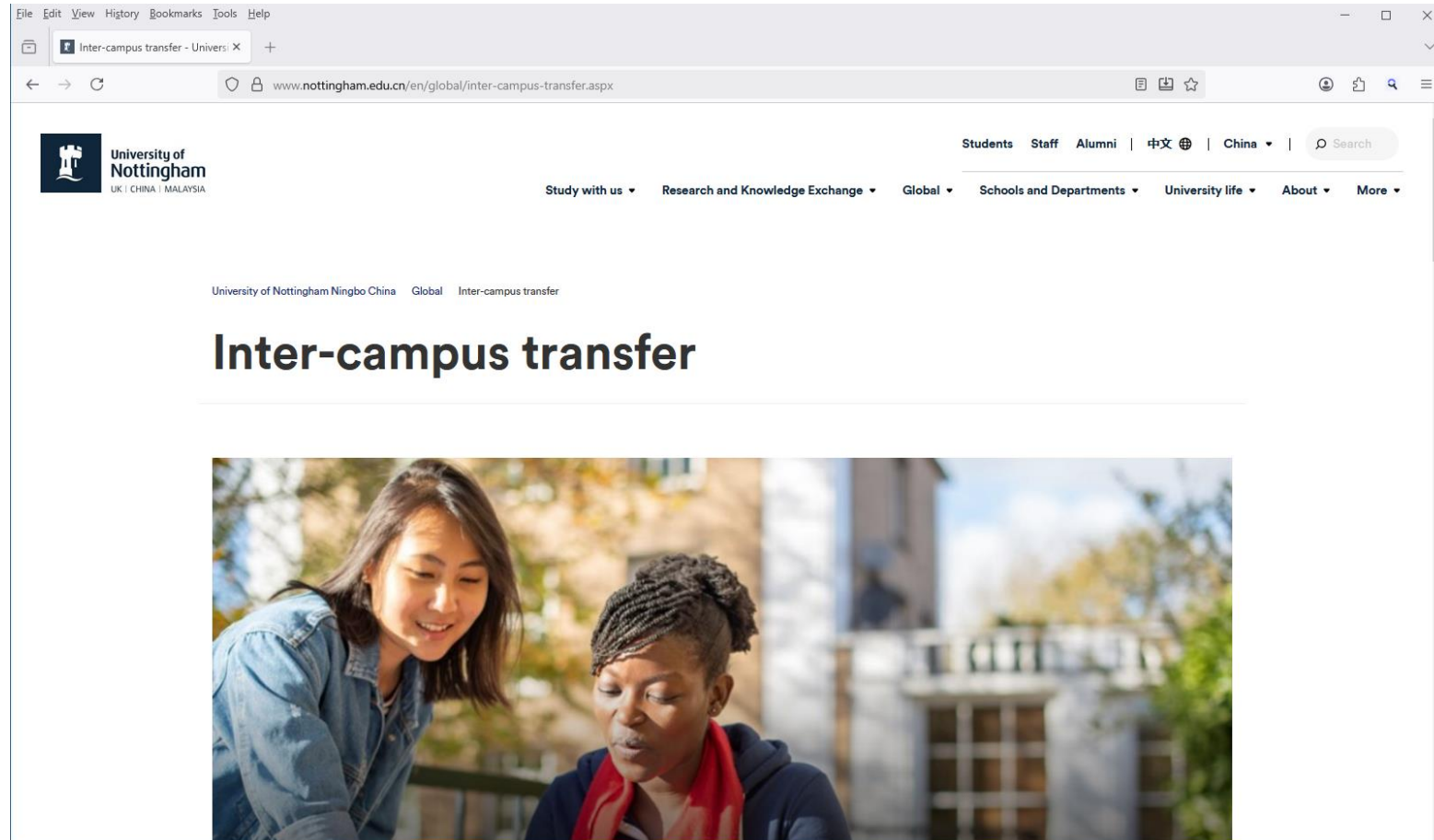
You can find all our FAQs about your time at university below, or you can use the search bar to search to easily search our FAQs.

All Type your question here Search

- Accommodation
- Appeals
- Assessments, coursework, and exams
- Disability support
- Documents
- Engagement and attendance (SEaTS App)
- Extenuating circumstances
- Fees and charges
- Financial support
- Graduation
- IT Support

# Inter-Campus Transfer

<https://www.nottingham.edu.cn/en/global/inter-campus-transfer.aspx>



# Welcome to the UK Quiz (by Claude Sonnet 4)

## Round 1: British Basics

### Question 1

What do Brits call what Americans call "fries"?

- A) Crisps
- B) Chips
- C) Wedges
- D) Spuds

### Question 2

What time is "half past" in British English?

- A) 15 minutes past the hour
- B) 30 minutes past the hour
- C) 45 minutes past the hour
- D) The end of the hour

## Round 2: Nottingham & Local Knowledge

### Question 3

Nottingham is famous for which legendary outlaw?

- A) Dick Turpin
- B) Robin Hood
- C) Blackbeard
- D) William Wallace

### Question 4

What is Nottingham's football team called?

- A) Nottingham City
- B) Nottingham United
- C) Nottingham Forest
- D) Nottingham Rovers

## Round 3: British Food

### Question 5

What's traditionally served with fish and chips?

- A) Ketchup
- B) Mushy peas
- C) Coleslaw
- D) Curry sauce

### Question 6

A "full English breakfast" definitely includes:

- A) Croissants
- B) Pancakes
- C) Black pudding
- D) Porridge

# Quiz (do in your own time – check Appendix 2 for solution)

## Round 4: British Etiquette & Culture

### Question 7

What should you always do when boarding a British bus?

- A) Show your passport
- B) Say hello to everyone
- C) Queue in an orderly fashion
- D) Take your shoes off

### Question 8

If a British person says "That's quite nice," they probably mean:

- A) It's absolutely brilliant
- B) It's okay, nothing special
- C) It's terrible
- D) They're being very enthusiastic

### Question 9

What's the proper response when someone says "Alright?" as a greeting?

- A) "Yes, I'm fine, thank you very much"
- B) "Alright?" back
- C) "Good morning"
- D) Just nod silently

## Round 5: British Weather & Geography

### Question 10

What's the safest topic of conversation with any British person?

- A) Politics
- B) Personal income
- C) The weather
- D) Their age

### Question 11

How many countries make up the United Kingdom?

- A) 2
- B) 3
- C) 4
- D) 5

# Quiz

## Round 6: Peculiar British Things

### Question 12

What do British people genuinely discuss for hours?

- A) House prices
- B) What they had for lunch
- C) Traffic on the M25
- D) All of the above

### Question 13

What do Brits do when they accidentally make eye contact with a stranger?

- A) Wave enthusiastically
- B) Start a conversation
- C) Awkwardly look away immediately
- D) Bow politely

### Question 14

How do British people show they're really angry?

- A) Shout and gesture wildly
- B) Say "I'm not angry, I'm just disappointed"
- C) Slam doors
- D) Give you the silent treatment for months

### Question 15

What's the correct British way to end a phone call?

- A) "Goodbye"
- B) "Bye, bye, bye, bye, bye... bye"
- C) Just hang up
- D) "Cheerio, old chap"

### Question 16

What do British students call their evening meal?

- A) Dinner (if posh) or Tea (if Northern)
- B) Supper
- C) Evening meal
- D) It depends on what time they eat

### Question 17

How many times will a British person say "sorry" when YOU bump into THEM?

- A) Once
- B) Never - it's your fault
- C) At least three times
- D) They'll apologise to the nearest wall as well

# Quiz (do in your own time – check Appendix 2 for solution)

## Round 7: Nottinghamshire Dialect & Local Language

### Question 18

If someone in Nottingham says "It's black over Bill's mother's," what are they talking about?

- A) A family scandal
- B) The weather looks stormy
- C) Someone's cooking has burnt
- D) There's been a power cut

### Question 19

What's a "cob" in Nottinghamshire?

- A) A male swan
- B) A bread roll
- C) A small horse
- D) A type of hat

### Question 20

If a Nottingham local says "Ay up, duck!" to you, what should you know?

- A) There's a duck behind you
- B) They're asking if you're okay
- C) It's a friendly greeting (and you're not actually a duck)



# Support and Wellbeing

<https://www.nottingham.ac.uk/currentstudents/wellbeing/>

The graphic features the University of Nottingham logo and name at the top left, followed by 'UK | CHINA | MALAYSIA'. The main title 'Jubilee Campus Support and Wellbeing Team' is prominently displayed. Below this, four team members are introduced with their avatars and names: Liza Aspell (Support and Wellbeing Business), Morgan Machin (Support and Wellbeing Business), Claire Kirk (Support and Wellbeing Computer Science), and Jack Woodward (Support and Wellbeing Education). A red box highlights Claire Kirk's name and title. A large text box contains a message about the challenges of university and the support available. At the bottom, contact information is provided, with a red box highlighting the email address for Computer Science support.

University of Nottingham  
UK | CHINA | MALAYSIA

## Jubilee Campus Support and Wellbeing Team

**Liza Aspell**  
Support and Wellbeing  
Business

**Morgan Machin**  
Support and Wellbeing  
Business

**Claire Kirk**  
Support and Wellbeing  
Computer Science

**Jack Woodward**  
Support and Wellbeing  
Education

University can be challenging at times, and it can take a lot of courage to reach out for help  
If you have any concerns, no matter how small they might feel, we are here to support you  
We can offer a listening ear, and provide support, advice, guidance and can signpost you  
to areas of support both internal and external to the university

Come and talk to us in person or on Teams  
Get in touch to book an appointment by emailing:  
Computer Science: [support-science@nottingham.ac.uk](mailto:support-science@nottingham.ac.uk)  
Education & Business: [support-socialsciences@nottingham.ac.uk](mailto:support-socialsciences@nottingham.ac.uk)

**Claire's office**  
CompSci Building  
C38



[https://mediaspace.nottingham.ac.uk/media/1\\_1sercupc](https://mediaspace.nottingham.ac.uk/media/1_1sercupc)

# Additional Support (slides attached as appendix)

- Senior Tutor
  - Senior Tutor is responsible for coordinating personal tutoring and related student support and development activities in the school
- CompSci Senior Tutor Team
  - Peer-Olaf Siebers
  - Liz Felton
- Contact
  - [ps-cs-senior-tutor@nottingham.ac.uk](mailto:ps-cs-senior-tutor@nottingham.ac.uk)

# For the following topics check out the Senior Tutor Slides

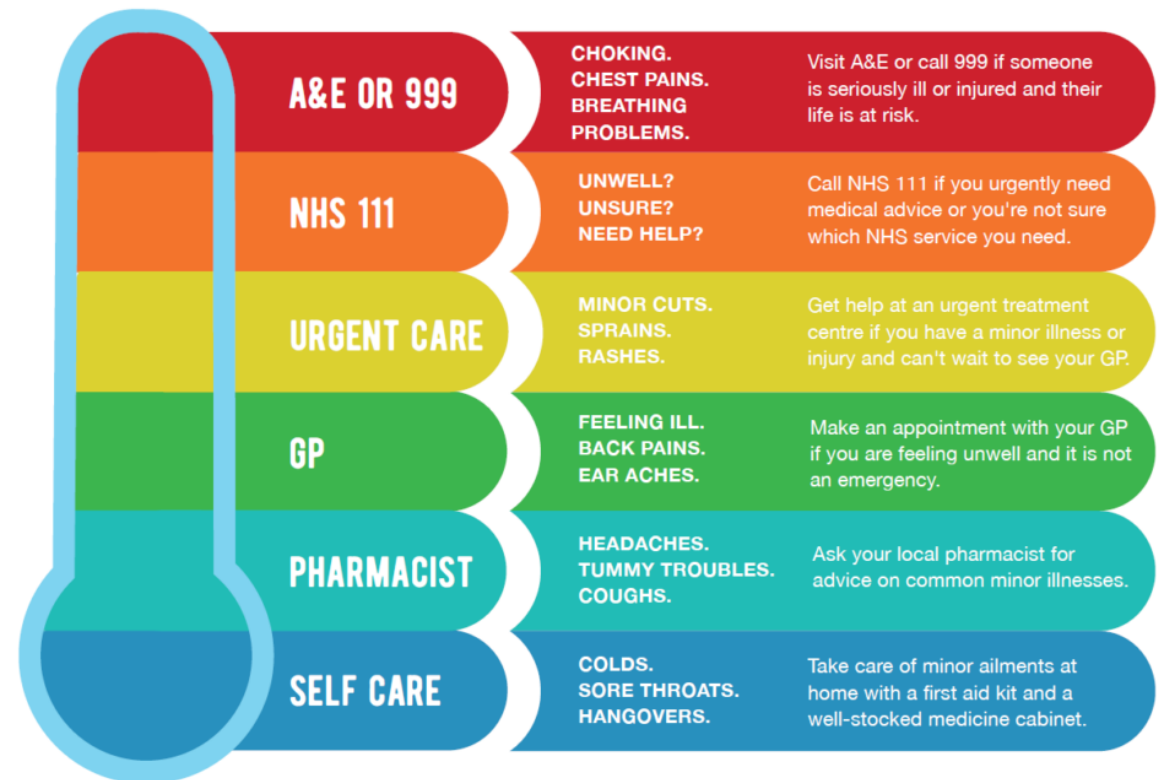
- Senior Tutor Role
- Extenuating Circumstances
- Disability Support Services
- Exam Adjustments and Religious Observance

## Slides are in Appendix 1

# Important Numbers

## Numbers to Remember on Campus

<b>8888</b>	<b>Emergencies</b>
0115 951 8888	Emergencies (mobile/external)
13013	Security (non-emergency)
13401	Health and Safety Department h&s@nottingham.ac.uk
0115 846 8888	Cripps Health Centre
16666	Estate Office Help Desk
0115 951 6666	Estate Office Help Desk (mobile/external)



# What to do in Nottingham

- Historical Sites
  - **Nottingham Castle:** Recently reopened after major renovations, featuring Robin Hood exhibitions and great city views
  - **City of Caves:** Fascinating network of sandstone caves beneath the city centre
  - **Ye Olde Trip to Jerusalem:** Claims to be England's oldest inn, carved into the castle rock
- Cultural Attractions
  - **National Justice Museum:** Interactive museum in the old courthouse
  - **Nottingham Contemporary:** Excellent modern art gallery
  - **Theatre Royal & Royal Concert Hall:** Top venues for shows and performances

# What to do in Nottingham

- Areas to Explore
  - **Lace Market:** Historic quarter with Victorian architecture, now full of bars, restaurants and independent shops
  - **Hockley:** Trendy area with vintage shops, cafés and street art
- Green Spaces:
  - **Wollaton Hall & Park:** Elizabethan mansion with deer park and Natural History Museum
  - **Sherwood Forest:** Just outside the city, perfect for Robin Hood fans
  - **The Arboretum:** Victorian park near the city centre



# What to do in Nottingham

- Shopping & Markets:
  - **Victoria Centre:** Major shopping centre
  - **Old Market Square:** Regular markets and events in one of the UK's largest city squares
- Daily Shopping (note that Sundays shops close at 4/5pm)
  - **Lidl + Aldi:** Low price segment
  - **Sainsbury + Tesco:** Medium price segment
  - **Marks & Spencer Food + Waitrose:** High price segment
  - **Small shops:** Have generous opening hours

# QR Code Scanning

<https://www.nottingham.ac.uk/currentstudents/news/supporting-your-academic-engagement>

Library and IT essentials

Exam Period

Study abroad

Students' Union

Your assessment results

Standards of behaviour

## Supporting your academic engagement



Tuesday, 11 October 2022

Following a successful adoption of the Student Engagement Dashboard, the university will continue using it during the academic year ahead.

The Student Engagement Dashboard helps staff identify undergraduate and postgraduate taught students who may need additional support with their studies or more general wellbeing.

The dashboard captures your engagement in face-to-face teaching via QR codes displayed by the teaching staff during your lecture, seminar, tutorial, lab, etc. To log your attendance, open the camera (or QR reader app) on your phone, scan the QR code, and enter your username and password. If you are unable to capture your attendance, please speak to teaching staff who can enter the information on your behalf.

This information is then fed into the dashboard along with other data, such as that from Teams meetings, Moodle activity, and other digital tools activities, to provide key members of academic and support staff an overview of your academic engagement. The experience of both students and staff during 2021/22 has been reviewed and the engagement dashboard has been enhanced to include a view that your personal tutor can access.

The dashboard will be used to support your welfare and will not impact your grades or assessments. If we notice a significant change in your levels of academic engagement, your personal tutor, your academic unit or a member of the Support and Wellbeing team may reach out to you with an offer of support. There will be no judgement attached to such an offer – merely an offer of help if you need it.

If you are on a sponsored student visa the dashboard will also be used to support the monitoring requirements of UK Visas and Immigration.

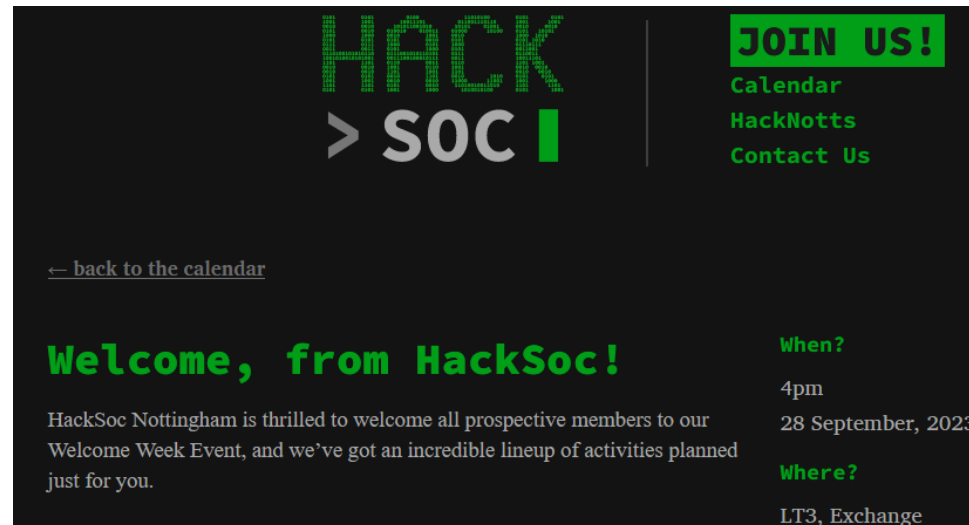
You will be able to request a copy of the data we hold about you in the dashboard at any time. To



University of  
Nottingham  
UK | CHINA | MALAYSIA

# Anything Else?

- Staff usually reply to emails in 2-3 working days (but some might take longer)
- Student Evaluation of Module (SEM)
- Student Union (Societies and Advice)
- Discord
- HackSoc



# Final Words

- Risk

- It's easy to spend time with your friends from Ningbo
- If you do this too much, you miss opportunities arising from being in the UK

- Advice

- Make most out of your time in UNUK
- Be part of the UNUK community
- Get to know staff well
- Show off how good you are



Enjoy your time with us in the UK

# Questions?



Image Source: <https://improvingteaching.co.uk/2022/02/20/professional-development-that-works-three-questions-to-ask/>

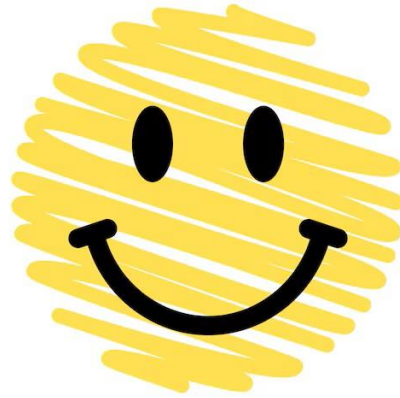


# Appendix 1

Senior Tutor Presentation Slides



# Senior Tutor Team



Peer-Olaf Siebers and Liz Felton

[peer-olaf.siebers@nottingham.ac.uk](mailto:peer-olaf.siebers@nottingham.ac.uk)

22/09/2025

# Contact

- Senior Tutor Team
  - Liz Felton ([liz.felton@nottingham.ac.uk](mailto:liz.felton@nottingham.ac.uk))
  - Peer-Olaf Siebers ([peer-olaf.siebers@nottingham.ac.uk](mailto:peer-olaf.siebers@nottingham.ac.uk))
- Our joint email account (quickest way to get a response)
  - Senior Tutor Team: [ps-cs-senior-tutor@nottingham.ac.uk](mailto:ps-cs-senior-tutor@nottingham.ac.uk)
- We aim to respond within 3 days
  - If you do not get a response within 3 days, please resend your message, adding an @ at the beginning of your subject line (e.g. "@ Interruption of study advice needed")



# Our Role

- Main duty: Providing pastoral care including acting as a secondary source of advice where problems cannot be resolved by personal tutors
- We attend School / Faculty / University Meetings
  - Learning Community Forum
  - Teaching and Learning Committee
  - Senior Tutors' Network ...
- We are in touch with
  - Disability Liaison Officer
  - University's Support and Wellbeing Service
  - Extenuating Circumstances Panel
  - Director of Teaching and Learning ...

# Useful Links

- Student Enquiry Centre (and EC submission)
  - <https://student-enquiries.nottingham.ac.uk/>
- Report + Support (report inappropriate behaviour)
  - <https://reportandsupport.nottingham.ac.uk/>
- Progression
  - <https://www.nottingham.ac.uk/qualitymanual/2-documents/ug-regs-flow-chart.pdf>
- Scams
  - <https://www.nottingham.ac.uk/dts/security/protecting-yourself/phishing-emails.aspx>

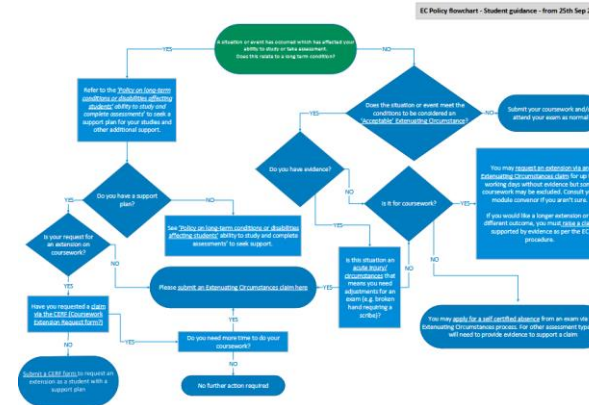


# Extenuating Circumstances (1/2)

- Extenuating Circumstances (ECs) are events that affect your performance in assessments which are unforeseen and out of your control
  - For exceptional, short-term circumstances
    - QM Regulations: <https://www.nottingham.ac.uk/qualitymanual/assessment-awards-and-deg-classification/ext-circumstances.aspx> (check Section 2)
    - Student Services: <https://www.nottingham.ac.uk/studentservices/servicedetails/extenuating-circumstances/extenuating-circumstances.aspx> (best description)
  - For long term circumstances use the Disability Support Services
    - <https://www.nottingham.ac.uk/studentservices/servicedetails/disability-support-services/disability-support-services.aspx> (apply as soon as you join the school)

# Extenuating Circumstances (2/2)

- ECs with Evidence
  - Check QM EC regulations (Section 2.3)
- ECs without evidence
  - Check QM EC regulations (Section 2.4)
- Timeline
  - Coursework
    - Claims must be submitted **before the coursework deadline**
  - Timetabled examinations/assessments
    - EC claims must be submitted prior to, or **within 5 working days** of, the examination/assessment
  - Evidence
    - Should usually be provided **at the time of making the EC claim**
    - May be submitted **up to 10 working days** from the deadline / examination
  - Submission is online



<https://www.nottingham.ac.uk/studentservices/documents/extenuating-circumstances/new-ec-policy-flowchart-1.pdf>

# Disability Support Services

- Disability Support Services
  - Offer support for students with a disability, mental health difficulty, long-term medical condition, autistic spectrum condition, or a specific learning difference such as dyslexia, dyspraxia, dyscalculia or ADHD.
    - <https://www.nottingham.ac.uk/studentservices/servicedetails/disability-support-services/disability-support-services.aspx> (apply as soon as you join the school)
  - Support plan (discuss what can be offered with the Disability Liaison Officer)
    - Reasonable time adjustments for completing coursework and exams
    - Room adjustments during exams ...
- Remember ...
  - For long term circumstances use the Disability Support Services
  - For exceptional, short-term circumstances use EC procedure

# Exam Adjustments

- Exam adjustments
  - All details: <https://www.nottingham.ac.uk/student-services/service-details/assessment-and-examinations/exam-adjustments-and-religious-observance.aspx>
  - Long term: Contact Disability Support Services
  - Short term: Apply for ECs
- Religious observance: Fill out Religious Observance form (use above link)
  - Exams can be scheduled on Saturdays
- For **application deadlines** check above webpage



# Generative AI

- Read and obey the Quality Manual Rules about Generative AI
  - <https://www.nottingham.ac.uk/qualitymanual/assessment-awards-and-deg-classification/pol-academic-misconduct.aspx> (check Section 2.2)
- There are many use cases where you can use Generative AI
  - Using it as a tutor
  - Using it as a dictionary
  - Creating projects not related to coursework ...
- If you are using it for activities that are prohibited under the Quality Manual regulations (e.g. translation of coursework) it will lead to a lot of trouble

# Questions?



Image Source: <https://improvingteaching.co.uk/2022/02/20/professional-development-that-works-three-questions-to-ask/>

# Appendix 2

Quiz Solutions

# Quiz Solution

- Q1: B
- Q2: B
- Q3: B
- Q4: C
- Q5: B
- Q6: C
- Q7: C
- Q8: B
- Q9: B
- Q10: C
- Q11: C
- Q12: D
- Q13: C
- Q14: B
- Q15: B
- Q16: A
- Q17: C
- Q18: B
- Q19: B
- Q20: C